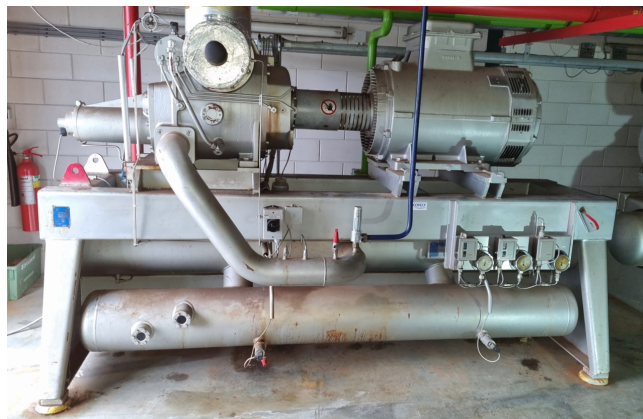


# Sabroe SAB 202 SM

## Specifications

Brand	Sabroe
Type	SAB 202 SM
Refrigerant	NH 3 (ammonia)
kW at +10°C/+40°C	1590,1
kW at 0°C/+40°C	1109,6
kW at -5°C/+40°C	915,7
kW at -10°C/+40°C	748,8
kW at -20°C/+40°C	576,1
kW at -30°C/+40°C	366,4
kW at -40°C/+40°C	215,7
Electromotor Specs	250 kW
Capacity Control	✓
On steel base frame	✓
Pressure safety switches	✓
Hp/Lp/Op	
Pressure gauges	✓
Hp/Lp/Op	
Oil separator	✓
Sight Glass	✓
Sizes	3250x1500x2110 mm (LxWxH)
Stock	1



## Description

### Used Sabroe SAB 202 SM

Used Compressor unit Sabroe SAB 202 SM. This compressor unit has the following components: Sabroe SAB 202 SM screw compressor, electromotor Schorch KN7317L-AXO1B-Z (250 kW at 2975 RPM), oil Separator Sabroe OHU 4131 610 liter, oil Cooler Vahterus 3HH-176/2/2 and a control panel.

\*Why choose for HOSBV? We're not only the largest used refrigeration specialist in Europe, but also, we deliver all equipment including an extensive test, warranty and industrial cleaning. \*If requested we are happy to arrange your logistics.

